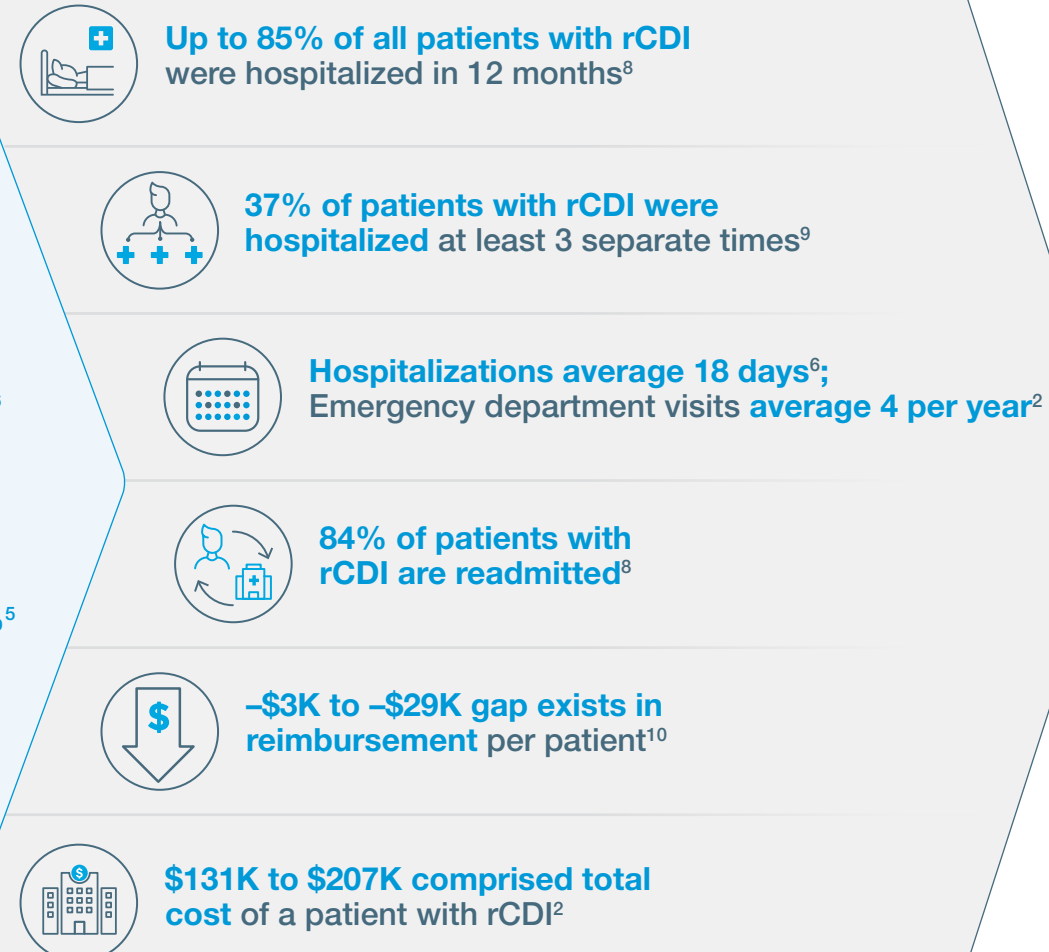
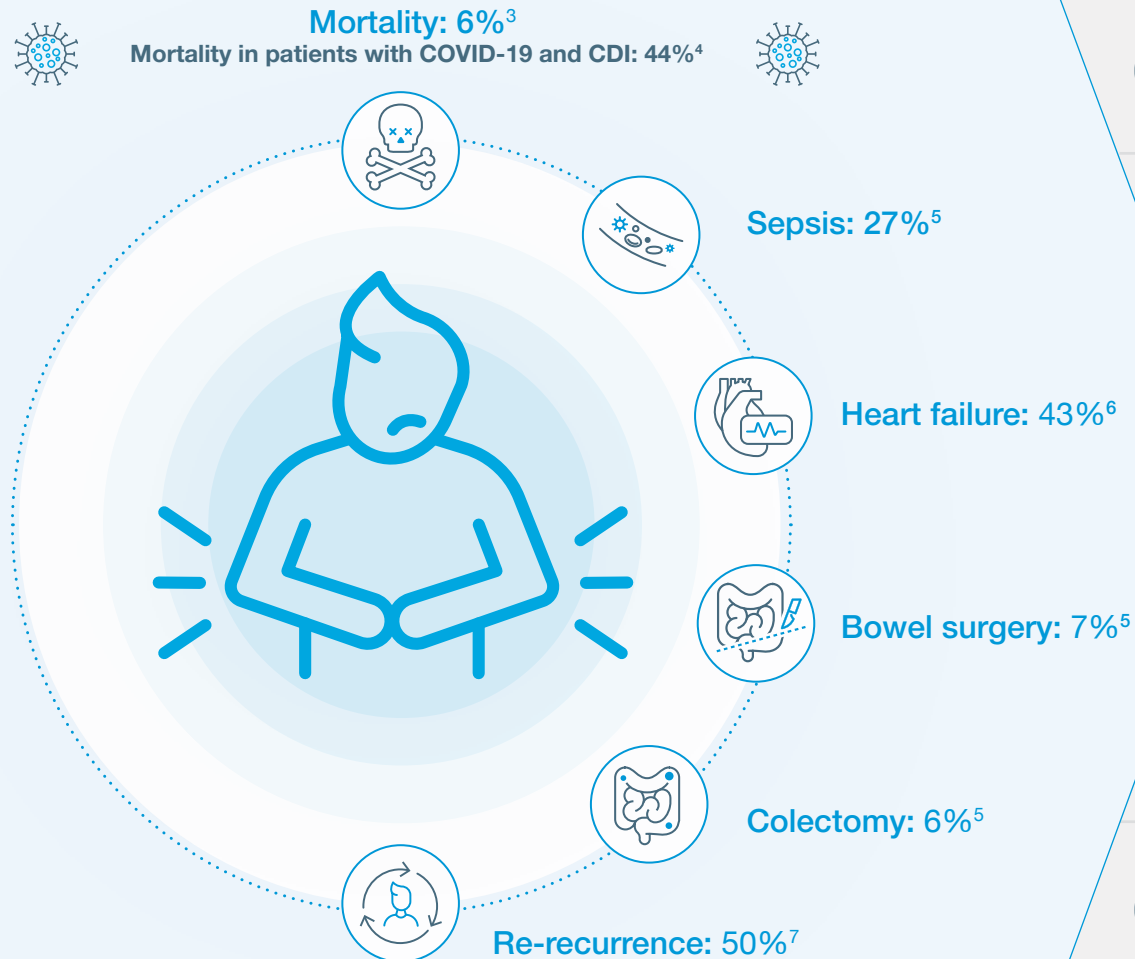


## C. DIFFICILE INFECTION (CDI)—

# A vicious cycle of recurrence that results in a significant burden<sup>1,2</sup>

APPROXIMATELY HALF A MILLION CDI CASES  
IN THE UNITED STATES ANNUALLY<sup>2,3</sup>

RECURRENT CDI (rCDI) AFFECTS PATIENT QUALITY OF LIFE  
AND HOSPITAL QUALITY METRICS AND REIMBURSEMENT



## BREAK THE CYCLE



LEARN MORE ABOUT BREAKING THE  
CYCLE OF *C. DIFF* RECURRENCE AT  
[POWEROFMICROBIOME.COM](https://POWEROFMICROBIOME.COM)



Antibiotics are the standard of care for the treatment of *C. diff* and effective for some. However, their use has been shown to disrupt the ecology of the gut microbiome and are a predominant risk factor for CDI recurrence.<sup>11</sup>

**References:** 1. Centers for Disease Control and Prevention. <https://www.cdc.gov/drugresistance/pdf/threats-report/clostridioides-difficile-508.pdf>. Accessed June 24, 2020. 2. Feuerstadt P, et al. *J Med Econ*. 2020;23(6):603-609. 3. Lessa FC, et al. *N Engl J Med*. 2015;372(9):825-834. 4. Sandhu A, et al. [published online May 22, 2020]. *Emerg Infect Dis*. 2020;26(9):10.3201/eid2609.202126. doi:10.3201/eid2609.202126. 5. Scott TA, et al. AGA Abstracts. 2020;158(6)(suppl 1):s976. 6. Unni S, et al. Presented at AMCP 2020. April 21-24, 2020; Houston, Texas. 7. Riddle DJ, Dubberke ER. *Infect Dis Clin North Am*. 2009;23(3):727-743. 8. Rodrigues R, et al. *Infect Control Hosp Epidemiol*. 2017;38(2):196-202. 9. Unni S, et al. *JMCP*. 2020;26(4a):s7. 10. Zilberberg MD, et al. *Medicine*. 2018;97(36):e12212. doi:10.1097/MD.00000000000012212. 11. McDonald LC, et al. *Clin Infect Dis*. 2018;66(7):e1-e48.

**FERRING**  
PHARMACEUTICALS

©2020 Ferring B.V. US-MBIO-2000005