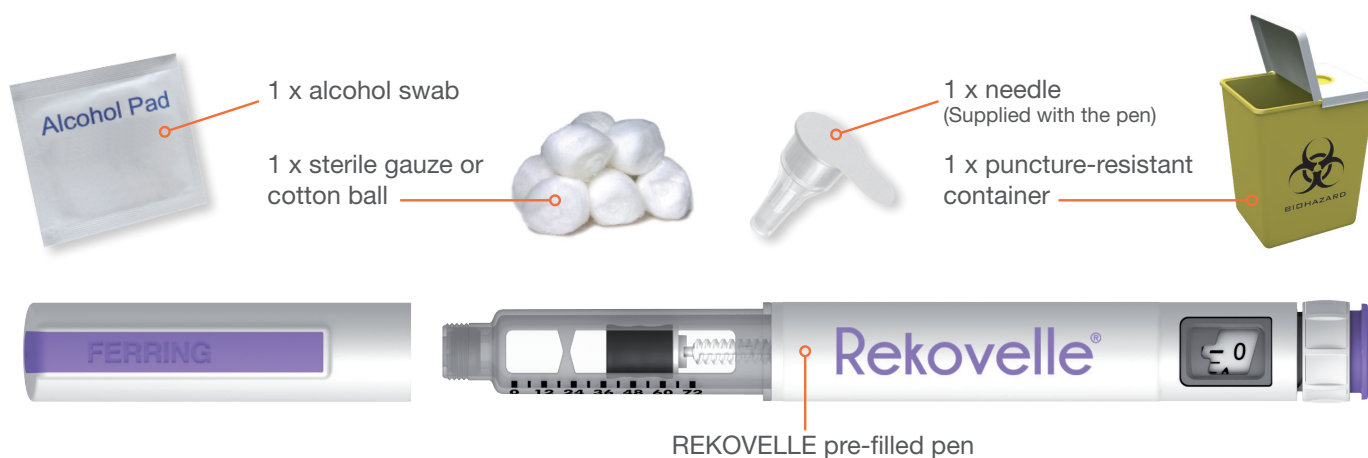


Supplies you will need to give your REKOVELLE injection



Information about your REKOVELLE pre-filled pen

- The pen can be dialed to give doses from 0.33 mcg to 20 mcg of REKOVELLE in marked increments of 0.33 mcg.
- The dose scale of the pen is numbered from 0 to 20 mcg.
- Each number is separated by two lines, each line is equal to one increment of 0.33 mcg.

Storage

- Always store the pen with the pen cap on without a needle attached.
- **Do not use** the pen after the month of expiration (EXP) printed on the pen label.

Before use:

- Store the pen in a refrigerator at 2°C to 8°C. Do not freeze.

After first use (in-use period):

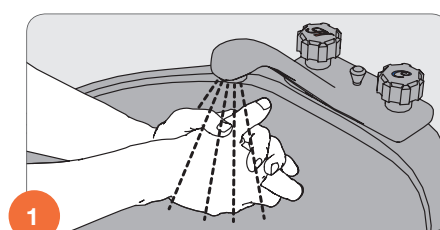
- The pen may be stored for up to 28 days at or below 30°C.

Please visit
<https://rekovelle.sg>
to watch the video
on the instructions

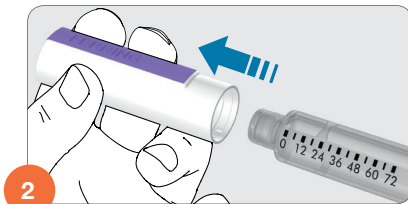


STEP 1 – BEFORE USE

- Wash your hands.
- Do not use the pen if it is damaged.
- Do not use a pen with particles or unclear medicine in the cartridge.
- Make sure you have the correct pen with correct strength.
- Check the expiration on the pen label.

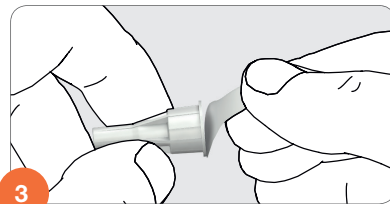


STEP 2 TO 6 – ATTACHING NEEDLE



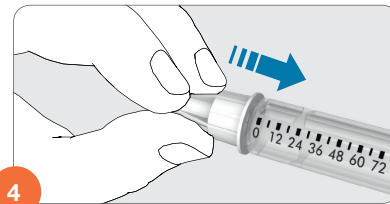
2

Pull off the pen cap.



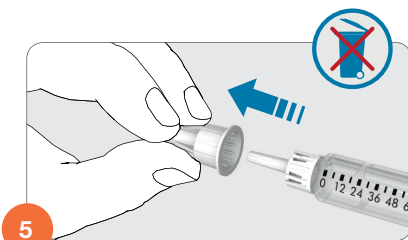
3

Pull off the protective foil from the needle.



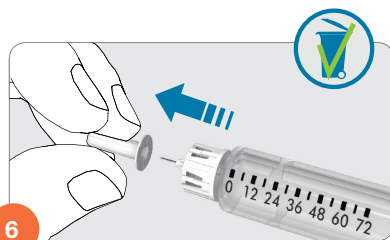
4

Click on the needle. You will feel a click when the needle is safely on. You may also screw on the needle. When you feel a light resistance, it is safely on.



5

- Pull off the outer needle cap.
- Do not throw the outer needle cap away. You will need it to throw the needle after injecting the medicine.

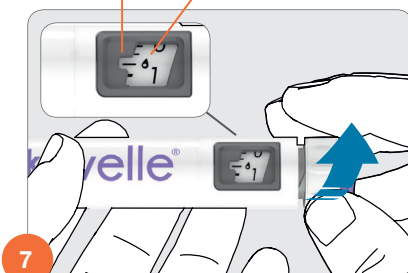


6

- Pull off the inner needle cap and throw it away.

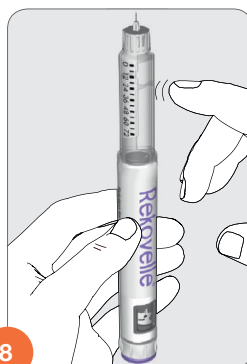
STEP 7 TO 9 – PRIMING

Dose indicator Symbol of a droplet



7

- Turn the dose knob clockwise until a symbol of a droplet lines up with the dose indicator.
- If you dial the incorrect priming dose, it can be corrected by turning the dose knob in either direction until the droplet symbol lines with the dose indicator.



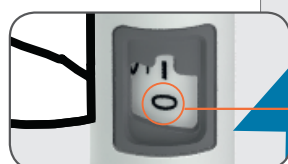
8

- Hold the pen with the needle pointing upwards.
- Tap the cartridge holder to make any air bubbles rise to the top.

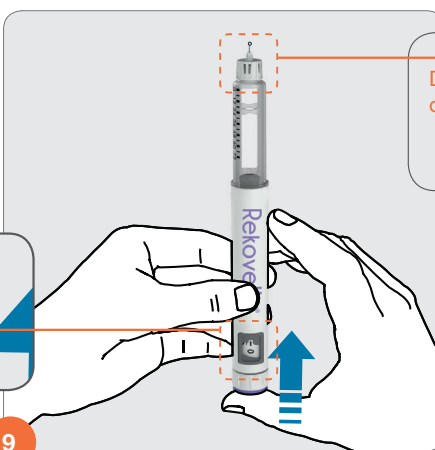
Important

- Only prime your pen the first time you use it.
- If the pen has already been used proceed directly to Step 10.

With the needle still pointing upwards, press the injection button all the way in until the number '0' lines up with the dose indicator.



9



Droplet of liquid

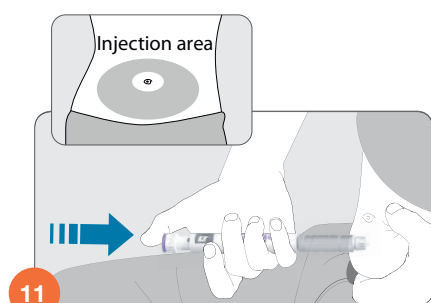
- A liquid droplet will appear at the tip.
- If no droplet(s) appear, repeat Steps 7 to 9.

STEP 10 – DIALING THE DOSE

- Turn the knob clockwise until the prescribed dose lines up with the dose indicator.
- The dose can be corrected by turning the dose knob in either direction until the correct dose lines up with the dose indicator.
- Do not press the injection button when dialing the dose to avoid loss of medicine.
- If you are unable to dial your complete dose, you may need more than one pen to complete your prescribed dose.
- Please refer to **split dosing** for more information.



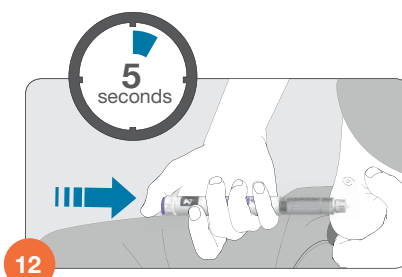
STEP 11 TO 12 – INJECTING THE DOSE



- Wipe the injection site with an alcohol swab.
- Hold the pen so the dose display is visible during the injection.
- Pinch your skin and insert the needle straight into your skin. After the needle is inserted, press the injection button all the way in and hold.
- When you see the number '0' lined up with the dose indicator, wait for 5 seconds.

Important:

- **Do not** use the pen if the medicine contains particles or if the medicine is not clear.
- Use a new injection site for each injection.
- **Do not** tilt the pen during injection and removal from skin.
- Tilting the pen can cause the needle to bend or break off.
- If a broken needle remains stuck in the body or under the skin, get medical help immediately.



- Release the injection button after 5 seconds. Slowly remove the needle by pulling it straight out of the skin.
- Press a gauze pad or cotton ball lightly on the injection site.

STEP 13 – DISPOSAL OF NEEDLE

Note:

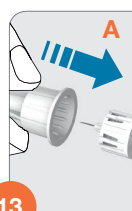
- Always remove the needle after every use. The needles are for single-use only.
- **Do not** store the pen with the needle attached.



Outer needle cap

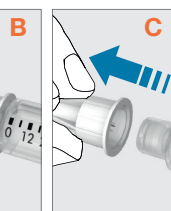
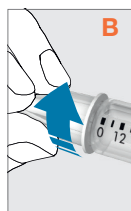


Inner needle cap



13

Carefully replace the outer needle cap over the needle with a firm push (A).

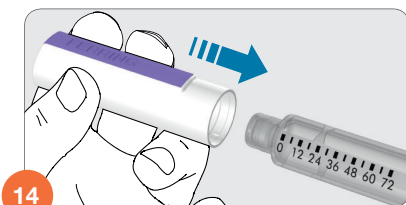


Unscrew the needle in anti-clockwise direction to remove the needle from the pen (B+C).



Throw away the used needle carefully (D).

STEP 14 – REPLACE PEN CAP



Firmly replace the pen cap on the pen for protection.

Note:

- The pen cap will not fit over a needle.
- Keep the pen cap on the pen when not in use.

DISPOSAL

Needles:

Put your used needles in a puncture-resistant container, such as a sharps disposal container immediately after use. Dispose accordingly.

SPLIT DOSING

- If you are not able to dial the full prescribed dose in your pen, this means that there is not enough medicine left in the pen to give the full dose.
- You will need to give part of your prescribed dose using your current pen and the remainder of the dose using a new pen or you may use a new pen for the entire prescribed dose.
- Refer to the [split-dose diary](#) below for examples of split dose injections.

| A Prescribed Dose | B Dose left in pen (Dose shown at dose indicator in dose display window) | C = A minus B Dose to inject on new pen (Dose shown at dose indicator in dose display window) |
|----------------------|---|--|
| E.g. 11.33 | 4.00 (4) | $11.33 - 4.00 = 7.33$ (7 and 1 line) |
| E.g. 12.00 | 6.66 (6 and 2 lines) | $12.00 - 6.66 = 5.34$ round to 5.33 (5 and 1 line) |
| E.g. 18.33 | 8.66 (8 and 2 lines) | $18.33 - 8.66 = 9.67$ round to 9.66 (9 and 2 lines) |
| | | |
| | | |



Ferring Private Ltd.

168 Robinson Road #13-01 Capital Tower Singapore 068912
Tel: +65 6812 7500 | Fax: +65 6812 7510 | www.ferring.com

